

Let's think about where to evacuate

There are **other options for evacuation** other than a designated emergency evacuation site. Disaster risks of your current location and situation determine where you should evacuate.

"Evacuation" means to "avoid danger."

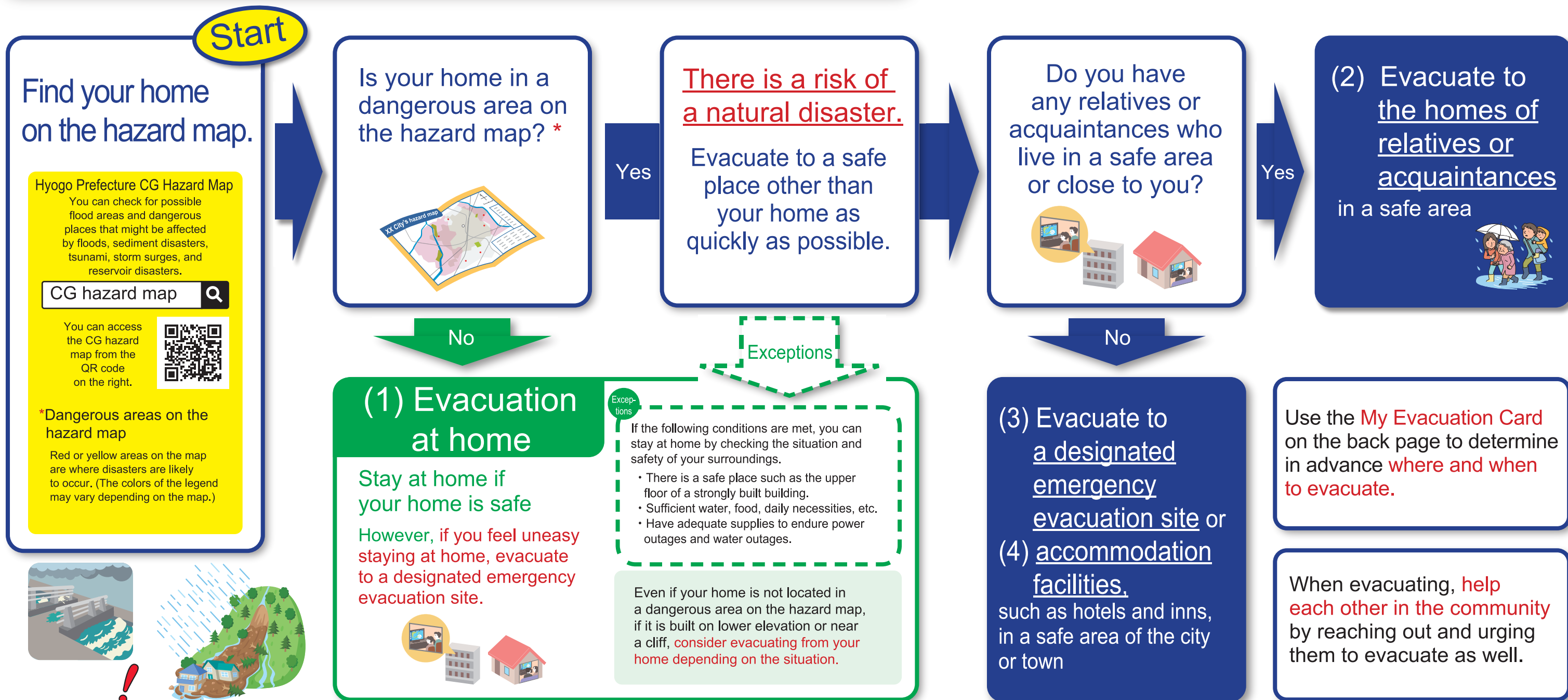
If you are at a safe place, you do not need to evacuate to a designated emergency evacuation site. While keeping in mind of **"protecting your own life,"** you should **evacuate to a safe place at a right time.**

Prepare for evacuation at home

You may **evacuate at home** if your home is safe. However, you may not be able to live your normal lifestyle due to the suspension of essential utilities and outages, so you are advised to **prepare sufficient provisions** on a daily basis.

Use the Hyogo Emergency Net app

The Hyogo Emergency Net app is a service designed to provide emergency information, such as **evacuation information** and other information related to earthquakes, tsunamis, and weather warnings from Hyogo Prefecture and municipalities in the prefecture. Be sure to download it in the event that a disaster may occur.



Preparing for evacuation at home

Stockpiling necessary water, food, and daily necessities

Stockpile necessary items to prepare for the event of a power, water, and gas outage and when you cannot buy food. It is also effective **"rotating your stockpile"**: stockpile a little more than what you normally use at home, use up your stockpile, then repurchase what you have used in your daily life.

Inspect your home

Tidy up any items and repair anything that can be easily blown by the wind.

Examples of necessary items to stockpile in the event of a power, water and gas outage and when you cannot buy food

(In case of utilities outages)

- ☐ Flashlight, headlight
- ☐ Batteries, mobile charger
- ☐ LED lantern
- ☐ Generator (always ventilate when using it)
- ☐ Portable stove, gas canister

When a water outage is anticipated, it is important to store water in your bathtub in advance.

Tips to conserve water and limiting water use

- Cooking
 - ☐ Saran wrap (cover plates before using it so you don't have to wash the plates after use)
 - ☐ Paper plates, paper cups, disposable chopsticks
 - ☐ Paper towels (for wiping off dirt)
 - Bath, shower
 - ☐ Disposable body towels
 - ☐ Dry shampoo
 - Toilet
 - ☐ Emergency portable toilet
 - ☐ Air freshener, odor eliminating spray
- (Food) Stockpile food for at least 3 days (up to one week if possible) for everyone
- ☐ Drinking water (about 3 liters per person, per day)
 - ☐ Rice
 - ☐ Dried noodles, dry food
 - ☐ Pre-packaged food
 - ☐ Canned food (meat, fish, fruits, etc.)
 - ☐ Long-lasting vegetables (onions, potatoes, etc.)
 - ☐ Seasoning (sugar, soy sauce, noodle soup base, miso, etc.)
 - ☐ Confectionery (biscuits, chocolate, etc.)

(Fill in other items you need for everyday life)

☐

If you experiment living without electricity, gas, or water at home, you can become aware of what you will need when utilities services are suspended.

Things to keep in mind when evacuating at home

Things to be careful of even at home

When a typhoon is approaching, strong wind may cause objects to fly and break glass windows. Close the curtains and stay away from the windows.

Evacuate to a safer location

If you feel uneasy staying at home, evacuate to a safer location other than your home without hesitation.

Main features of the app

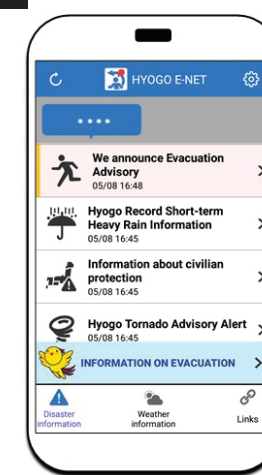
- A function to create your My Evacuation Card
- The push notifications of the app enable users to receive Information for evacuation and other weather information

Examples of information that will be sent

Emergency information from prefectures, cities, or towns; weather warnings/special warnings; earthquake information; tsunami warnings or alerts; information on possible heavy rainfall over a short period; sediment disaster warning; river flood forecasts; civil protection information, etc.

- Disaster Prevention Information Portal Site (links) that provides you a collection of useful information on disasters

Image of the phone screen



Other information

- Areas for evacuation in Hyogo Prefecture can be searched on a map
- 3 cities/towns can be registered
- If you share your location (GPS), you can also receive information on your current location
- Has the text-to-speech function
- Available in 12 foreign languages

Android



iOS



Scan the QR code to download the Hyogo Emergency Net.



Access to accurate and up-to-date information is critical during natural disasters. Stay informed on the information regarding evacuation, the water level of a river, etc., through the Hyogo Emergency Net, TV, radio, website, etc., in order to decide when you need to start evacuating.

Items to take with you when evacuating

Examples of items to include in your emergency kit

- ☐ Water (plastic bottle, portable water tank, etc.)
 - ☐ Food (rice (instant rice), pre-packaged food, cookies, chocolate, biscuits, etc.)
 - ☐ First aid kit, medication you need
 - ☐ Radio
 - ☐ Flashlight, headlight
 - ☐ Batteries, portable battery
 - ☐ Writing utensils
 - ☐ Bank book
 - ☐ Cash (include some coins)
 - ☐ Gloves (can also be used when it's cold)
 - ☐ Change of clothes, towels, blankets
 - ☐ Toothbrush
 - ☐ Face mask
 - ☐ Thermometer
 - ☐ Disinfectant, disinfectant wipes, etc.
- (Items you might need)
- ☐
- ☐
- Emergency bag



When it is difficult to evacuate to a designated emergency evacuation site, etc.

Determine in advance when to start evacuating so that you can move to a safe place in case of an emergency.

Is there any safe buildings nearby where you can evacuate to when you cannot safely evacuate to the predetermined evacuation site?

Yes

(5) Evacuate to a safe building nearby

The upper floor of a strongly built building located in a place where you can safely move to from your home, etc.

No

(6) Evacuate to the safest spot in your home

Examples of the safest spots in your home
• Rooms on the top floor
• Rooms on the second floor or higher on the opposite side of the mountain slope

Examples of cases in which you cannot move safely

• At night • Strong wind and rain • The surrounding roads are flooded • The surrounding rivers and irrigation canals are flooding